

# COVID-19 Ag Test

The NowCheck COVID-19 Ag Test is a rapid chromatographic immunoassay for the qualitative detection of specific antigens to SARS-CoV-2 present in human nasopharynx or nasal cavity.

## Specifications

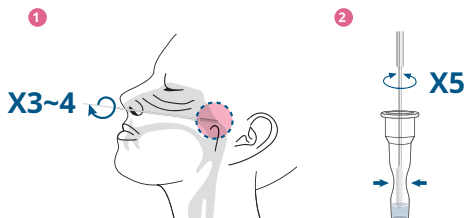
- Specimen : Nasopharyngeal swab, Nasal swab
- Testing time : 15~30 min.
- Storage Condition : 2-30°C (36-86°F)
- Clinical Sensitivity : 89.2% (92.2%, Days ≤ 7)
- Clinical Specificity : 97.3%



## Test Procedure

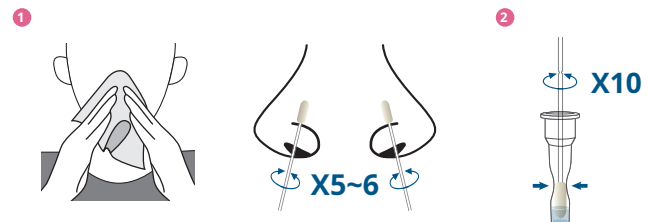
### Nasopharyngeal swab

- 1 Insert a nasopharyngeal swab into the nostril of the patient, and rotate the swab over the posterior nasopharynx surface 3~4 times.
- 2 Insert the swab into an extraction buffer tube, and stir it more than 5 times while squeezing the tube.



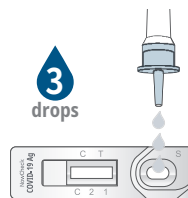
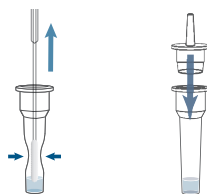
### Nasal swab

- 1 After getting a patient to blow one's nose, insert a nasal swab into one of the nostrils, and rotate the swab against the nasal wall 5-6 times. Repeat in the other nostril, using the same swab.
- 2 Insert the swab into an extraction buffer tube, and stir it more than 10 times while squeezing the tube.



### Analysis

- 3 Remove the swab while squeezing the sides of the tube, and press the nozzle cap tightly onto the tube.
- 4 Apply 3 drops of the extracted specimen to the specimen hole of the test device.
- 5 Read the test result after 15~30 min. The test can be read up to 30 min.



\*\* Do not read test results after 30 min.  
It may give false results.

## Ordering Information

Product No.	Product Name	Product Type	Packing Unit
RG1901DG (Nasopharyngeal)	NowCheck COVID-19 Ag Test	Device	25 Tests/Kit
RG1901DGN (Nasal)			
RG1901CD	NowCheck COVID-19 Ag Control	Control	10 Tests/Kit