



Huntingdale Pastoral
Holdings Pty Ltd

X



MOSAIC
INTERIORS

PREFAB HOUSING

Introduction





Introduction



Huntingdale Pastoral Holdings Pty Ltd



Huntingdale Pastoral Holdings Pty Ltd is an Australian commodities trading company that focuses on the oil and agricultural sectors. Leveraging its extensive global network, Huntingdale recognises the housing market demand in Australia and offers customised prefabricated housing solutions to meet these needs.



MOSAIC
INTERIORS

Mosaic as an architectural and interior design firm, we specialise in bespoke solutions for each project we undertake. Our approach involves meticulous customisation to meet the unique specifications of every endeavour. While prefabricated housing primarily aims for mass production, rapid construction, and cost-effectiveness, we emphasise the necessity of tailored customisation to ensure each project's individuality and quality.





Founders

When two exceptional individuals come together, a compelling spectacle emerges, forging a robust sense of unity.



Kenneth Lewis
CEO



Huntingdale Pastoral Holdings Pty Ltd



CHELSEA COMMODITIES TRADING PTE. LTD.

X



Mohamed Nhaza
Director



MOSAIC
INTERIORS





How is prefab house constructed ?



- 1. Design and Planning:** The process begins with designing the prefab house according to the client's specifications and requirements. This involves determining the layout, materials, and dimensions.
- 2. Factory Construction:** Once the design is finalised, the construction of the prefab house components begins in a factory. This includes walls, floors, ceilings, roofing panels, and other structural elements. These components are often constructed using wood, steel, or concrete depending on the design and desired characteristics of the house.
- 3. Transportation to Site:** After the components are completed in the factory, they are transported to the final building site. Depending on the size of the components and the distance to the site, they may be transported by truck, train, or even by sea.
- 4. Foundation Preparation:** Before assembly can begin, the site must be prepared with a suitable foundation. This typically involves laying a concrete slab or footings according to the specifications provided by the prefab house manufacturer.
- 5. Assembly:** Once the components are on-site and the foundation is ready, the assembly process begins. This usually involves lifting the components into place using cranes or other lifting equipment and then securing them together according to the manufacturer's instructions. This process can be relatively quick compared to traditional construction methods since much of the work has already been completed in the factory.
- 6. Finishing Touches:** After the main structural components are assembled, the finishing touches are added to the prefab house. This includes installing doors, windows, plumbing, electrical wiring, insulation, and interior finishes such as flooring and paint.
- 7. Final Inspection and Handover:** Once the construction is complete, a final inspection is carried out to ensure that the prefab house meets all building codes and quality standards. After passing inspection, the house is handed over to the client.



What materials are preferred for prefab housing?

The prefabricated house components are manufactured at our supplier's factory in Thailand. This production phase includes crafting walls, floors, ceilings, roofing panels, and other structural elements following a modular design. The choice of finishes will be selected in accordance with the design concept specified by the designers.



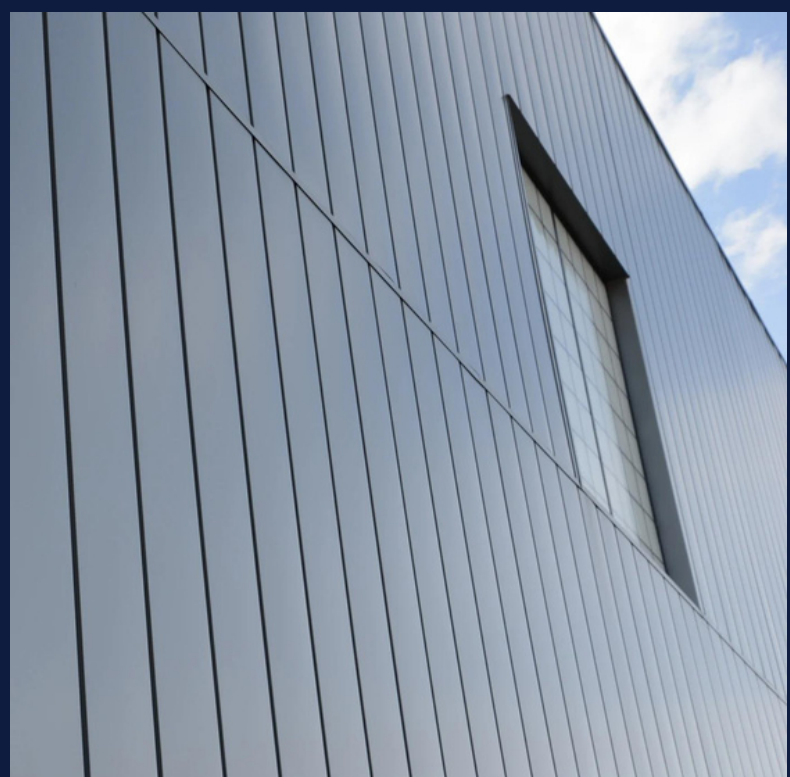
Prefabricated steel structure



Cement board &
Concrete floor deck



Wood panel



Prefabricated steel panel



Project Design



Brief and Research

To gather information and formulate a design concept.



Customisation

Based on the design concept, a unique and tailored design is meticulously crafted.



Execution

The design is engineered to prefabricated specifications for construction and assembly.



THANK YOU.



Huntingdale Pastoral Holdings Pty Ltd

X



MOSAIC INTERIORS